

## Amplitude T-Series

Portable Audiometry

*Our Amplitude T-Series is an entirely new concept in portable audiometry.*

The T-Series models have the audiometer circuitry built right into the patient response switch, and they are operated wirelessly from a Windows® PC.

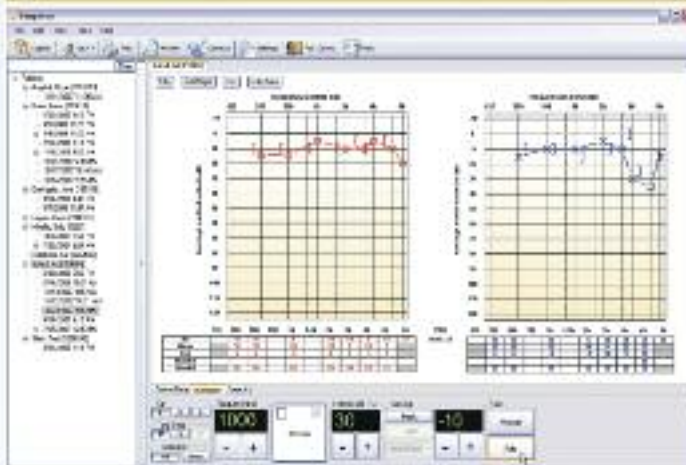
The Amplitude T3 offers automated and manual air and bone conduction testing, while the T4 offers automated and manual air conduction testing features.

The Amplitude T-Series addresses a wide range of needs, both efficiently and affordably.

**Amplitude**  
T-Series



*The audiometer is built into the patient response switch!*



- Wireless air and bone conduction testing
- Flexible manual and automated testing
- Rechargeable battery or outlet power
- Portable and convenient for on-the-go testing

Otovation®



**Amplitude T-Series**

Portable Audiometry

*The Amplitude T-Series is a breakthrough in portability and convenience.*

**What's included?**

- Amplitude handheld unit
- DC power adapter
- E5A Insert Phones
- USB Bluetooth adapter
- CD with PC software and User Guide

**Optional:**

- B-71 bone conductor (for T3 model)
- Carrying case
- TDH-39 or HDA200 headphones



Specifications	Amplitude T3	Amplitude T4
ANSI Type	3	4
Frequency Range		
AC	125 Hz to 8k Hz	125 Hz to 8k Hz
BC	250 Hz to 6k Hz	-
Intensity Levels		
AC	-10 to 100 dB HL at mid frequencies	-10 to 100 dB HL at mid frequencies
BC	-10 to 60 dB HL at mid frequencies	-
Transducers Supported		
AC	EAR 5A, TDH-39, HDA200	EAR 5A, TDH-39, HDA200
BC	B-71	-
Masking	Contralateral - Narrow Band Noise	-
Stimuli	Steady or pulse tone	Steady or pulse tone
Patient Response	Yes	Yes
External Power	5V DC / 300 mA	5V DC / 300 mA
Batteries	2 x AA (rechargeable)	2 x AA (rechargeable)
Communications	Bluetooth	Bluetooth
Range	30ft.	30ft.
Weight	5.5oz / 156gm	5.5oz / 156gm

Safety Standard: EN 60601-1

Tone: EN 60645-1 / ANSI 53.6 Type 3/4

SPECIFICATION CAN BE SUBJECT TO CHANGE WITHOUT NOTICE

THE UK'S LEADING SOURCE OF AUDIOLOGICAL INSTRUMENTS